

# CHALLENGE PRODUCTS



## CHALLENGE JOGGERS





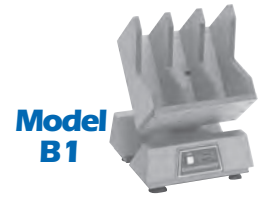
# JOGGERS

## Companion Series Joggers

Challenge offers four models of the popular Companion Series Joggers. Choose from two sizes each in the standard tilt top models (T1 & T2) and flat top (F1 & F2), or the high production bin top models (B1 & B2). Specially designed to offer the flexibility needed in a production environment, the four table styles are all interchangeable — one machine base will handle all table types. Powerful electro-magnetic jogging action.



**Model T1**



**Model B1**



**Model F1**



**Model B2**

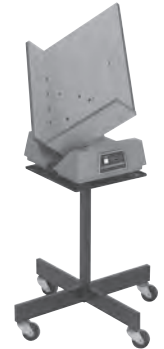
## Combination Series Joggers

These joggers are the workhorses of the industry. Table sizes — 20"x26" (model 2026A), 24"x36" (model 2436A) and 28"x40" (model 2840A) — can handle up to 4" lifts. Versatile as well, the table tilts from flat to 45°, and can be fitted with accessory dividers for multiple lifts of smaller stock. Jogging action is adjustable with the unique "Dial-a-Jog" control. The dual on/off control is actuated either with the toggle switch on the machine base, or by a foot switch for hands-free operation.



**Model 2026A**

### STAND OPTIONS



Optional, fixed-height, tubular steel stand has mounting plate with 1/4" lip to hold Companion Joggers.



Optional, adjustable-height (31" to 41"), heavy-duty, cast iron, stand – bolts to the bottom of the Combination Joggers.

## Challenge Products...

...crafted with pride in the U.S.A. since 1870.

### Specifications

Companion Joggers:	Model F1	Model F2	Model T1
Table Dimensions	14 x 20" 35.6 x 50.8 cm	17½ x 22½" 44.5 x 57.2 cm	4 x 14 x 20" H 10.2 x 35.6 x 50.8 cm
Overall Dimensions	16 x 20 x 7½" H 40.6 x 50.8 x 19 cm	17½ x 22½ x 7¼" H 44.5 x 57.2 x 18.4 cm	25½ x 17¾ x 26" H 64.8 x 45 x 66 cm
Electrical	115 Volts/4 Amps Single Phase, 60 Hz, AC. UL Listed.	115 Volt/4 Amps Single Phase, 60 Hz, AC. UL Listed.	115 Volt/4 Amps Single Phase, 60 Hz, AC. UL Listed.
	Model T2	Model B1	Model B2
Table Dimensions	4 x 17 x 24" H 10.2 x 43.2 x 61 cm	3¾ x 11¾ x 8" H 8.6 x 30.2 x 20.3 cm	4½ x 9¾ x 3" H 11.4 x 24.8 x 7.6 cm
Overall Dimensions	29 x 20¾ x 30" H 73.7 x 52.7 x 76.2 cm	16 x 17¾ x 22" H 40.6 x 45.1 x 55.9 cm	16 x 21¾ x 26" H 40.6 x 55.2 x 66 cm
Electrical	115 Volt/4 Amps Single Phase, 60 Hz, AC. UL Listed.	115 Volt/4 Amps Single Phase, 60 Hz, AC. UL Listed.	115 Volt/4 Amps Single Phase, 60 Hz, AC. UL Listed.
Combination Joggers:	2026A	2436A	2840A
Table Dimensions	20 x 26 x 4" H 50.8 x 66 x 10.2 cm	24 x 36 x 4" H 61 x 91.4 x 10.2 cm	28 x 40 x 4" H 71 x 102 x 10.2 cm
Overall Dimensions	22 x 27 x 14½" H 55.9 x 68.6 x 36.8 cm	25 x 37 x 14½" H 63.5 x 94 x 36.8 cm	29 x 41 x 14½" H 74 x 104 36.8 cm
Electrical	115 Volt/5.4 Amps Single Phase, ½ HP, 60 Hz, AC. UL Listed.	115 Volt/5.4 Amps Single Phase, ½ HP, 60 Hz, AC. UL Listed.	115 Volt/5.4 Amps Single Phase, ½ HP, 60 Hz, AC. UL Listed.

Challenge reserves the right to make changes to any product or specification without notice and without incurring responsibility to existing units.  
©Challenge and the Challenge logo are registered trademarks of The Challenge Machinery Company. All rights reserved.

For detailed information on Challenge products, call your local Challenge dealer, or for the dealer nearest you contact:

**The Challenge Machinery Company**  
6125 Norton Center Drive, Norton Shores, MI 49441-6081 U.S.A.  
**Phone 231-799-8484 • Fax 231-798-1275**  
[www.ChallengeMachinery.com](http://www.ChallengeMachinery.com)