

BST-d, BST-d+

PAPER HANDLING CAPABILITY

STOCK WEIGHTS

MAX 250 gsm*
MIN 45 gsm*

PAPER SIZES

MAX 520 mm x 350 mm
20" x 13 3/4"
MIN 200 mm x 115 mm
8" x 4 1/2"

SETS PER HOUR

with the BDF accessories
Up to 4200 sets/hour

ELECTRICAL RATINGS

POWER REQUIRED 120 VAC/60Hz
230 VAC/50Hz
POWER CONSUMPTION 1600 W max

RADIANT HEAT

MAX 5460 BTU/h
STANDBY 460 BTU/h

NOISE LEVEL

65 dBA (single tower without attachments)

DIMENSIONS

WIDTH
BST-d (+) main: 930 mm or 36 3/4"
BST-d (+) additional: 910 mm or 36"
DEPTH 730 mm or 29"
HEIGHT 2000 mm or 79"
WEIGHT BST-d + main or additional: 358 kg or 788 lbs

BME

PAPER HANDLING CAPABILITY

STOCK WEIGHTS

Coated/uncoated: 60 - 350 gsm
Cover: 60 - 350 gsm

PAPER SIZES

SADDLE IN - Mini paper size:
120 x 180 mm SEF
SADDLE OUT - Mini paper size:
120 x 70 mm SEF
SADDLE IN - Maxi paper size:
370 x 600 mm SEF
SADDLE OUT - Maxi paper size:
370 x 300 mm SEF
TOP - Mini paper size: 120 x 170 mm SEF
TOP - Maxi paper size: 370 x 300 mm SEF

SETS PER HOUR

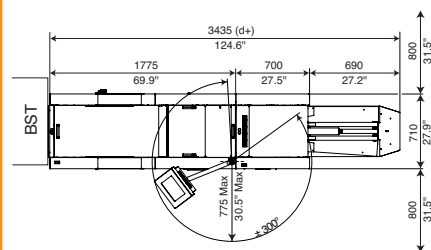
Up to 5000 sets/hour

ELECTRICAL RATINGS

Stitcher - Folder:
120 VAC/60HZ - 230 VAC/50Hz - 8/5 A
Trimmer:
120 VAC/60HZ - 230 VAC/50 Hz - 5/3,5 A

Total system weight: 550 kg or 1220 lbs

FLOOR PLAN



BDF

PAPER HANDLING CAPABILITY

STOCK WEIGHTS

Coated/uncoated: 60 gsm to 200 gsm
or 16 lb. to 90 lb.

Cover:

80 gsm to 300 gsm
or 202 lb. to 110 lb.

PAPER SIZES

(In process x cross process dimensions)
Saddle stitch:
203 x 120 mm to 520 x 356 mm
8" x 4 7/8" to 20 3/8" x 14"
Including CD size booklet

Top/side/corner stitch:

160 x 127 mm to 297 x 356 mm
6 1/8" x 5" to 11 5/8" x 14"

Finished booklet in folder or trimmer:

92 x 120 mm to 260 x 356 mm

Including CD size booklet

Trim max: 10 mm

MAXIMUM SET THICKNESS

SADDLE STITCH:

22 sheets, 80 gsm or 20 lb. or equivalent thickness, including cover.

SIDE/TOP STITCH/CORNER STITCH:

55 sheets, 80 gsm or 20 lb. or equivalent thickness, including cover.

SETS PER HOUR

Up to 4200 sets per hour

ELECTRICAL RATINGS

120 VAC/60Hz
230 VAC/50Hz - 750 W.

RADIANT HEAT

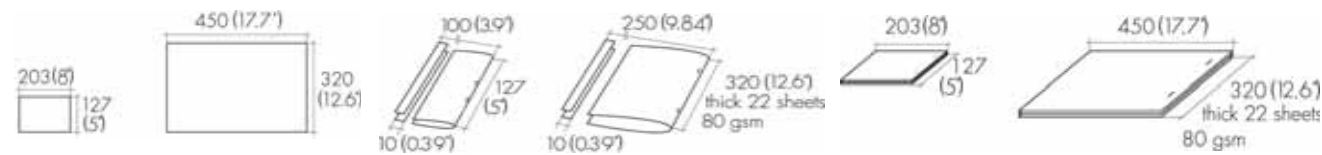
2560 BTU/H

FLOOR PLAN

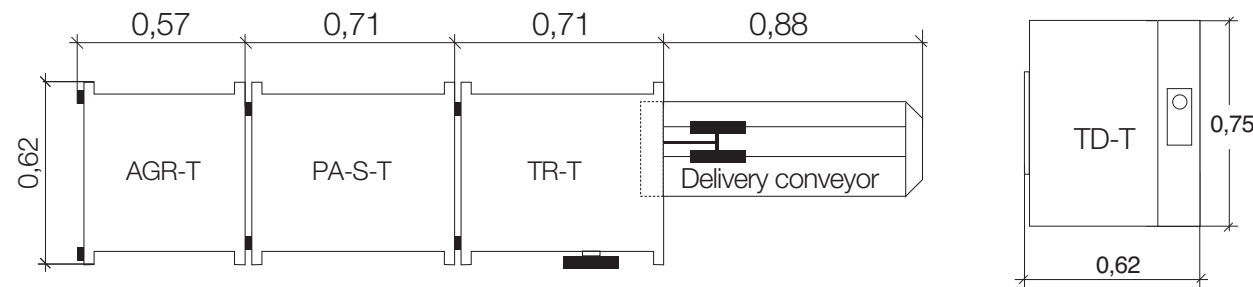
(See drawing)

WEIGHT Approx. 450 kg or 992 lbs.

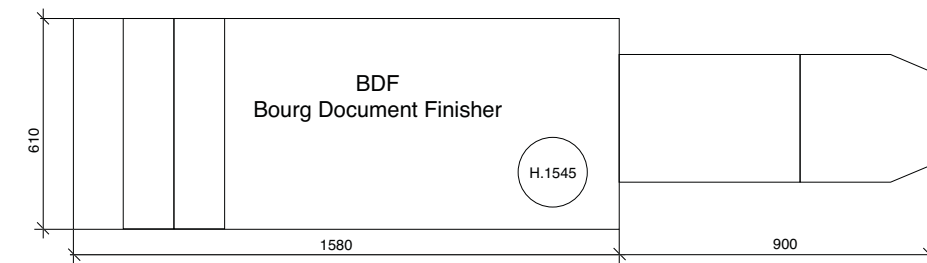
'T'accessories paper sizes in/out, production up to 3200 sets/hr



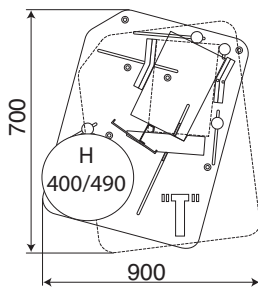
'T'accessories floor plan



BDF floor plan



Jogger floor plan



Cover: BSTd+, 3 Towers with BME and left exit criss-cross jogger illustrated

Production rates subject to environmental conditions, operator ability and quality of stock.
As a consequence of our policy of continuous improvement, specifications are subject to change without notice.

9133606 Ind. May 2008

BELGIUM

C.P. Bourg S.A. N.V.
Group European Headquarters
22, rue des Technologies
B-1340 Ottignies
Belgium
Tel.: +32 10 62 22 11
Fax: +32 10 61 36 38
Export fax: +32 10 61 63 55
E-mail: contactus@cpbourg.com
export.be@cpbourg.com

FRANCE

C.P. Bourg S.A.
Parc d'Affaires Silic
32, rue des Gémeaux
BP 60410
F-94573 Rungis
France
Tel.: +33 1 46 87 32 14
Fax: +33 1 46 87 52 17
E-mail: cpbourg_france@cpbourg.com

USA

C.P. Bourg Inc
USA Headquarters
50 Samuel Barnet Blvd.
New Bedford, MA 02745
USA
Tel.: +1 508 998 2171
Fax: +1 508 998 2391
E-mail: cpbourgusa@cpbourg.com

GERMANY

C.P. Bourg GmbH
Schweizerstrasse 70/1
D-72336 Balingen
Germany
Tel.: +49 7433 9981 680
Fax: +49 7433 9981 686
E-mail: cpbourg_germany@cpbourg.com

LUXEMBOURG

Ets C.P. Bourg Luxembourg S.A.
14 rue Millewee, B.P. 85
L-7201 Walferdange
Luxembourg
Tel.: +352 33 24 47
Fax: +352 33 19 99
E-mail: cpbourgluxembourg@cpbourg.com



c.p. bourg®

The Print Finishing Experts



TOWER COLLATORS

* dependent on paper grain

TOP QUALITY PERFORMANCE WITH HIGHEST SPEED COLLATING

The **BST10d, BST10d+**, towers have set the top standard in paper feeding reliability and consistency. The heavy duty construction of the towers allows the BST towers to function profitably for many years after competitive machines have become obsolete. The BST is engineered to exceed the expectations of commercial printers, quick printers, trade bineries and digital printers who need to produce high quality booklets. The ease of use and productivity of the BST will increase your profits and throughput. **The BST is a 10 station, modular, vertical, full width, section belt collator.**

(not using inferior suction rollers or partial width suction feed).

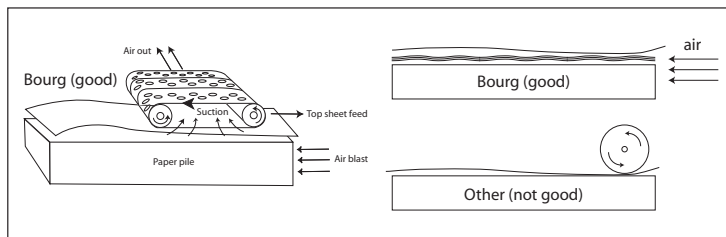
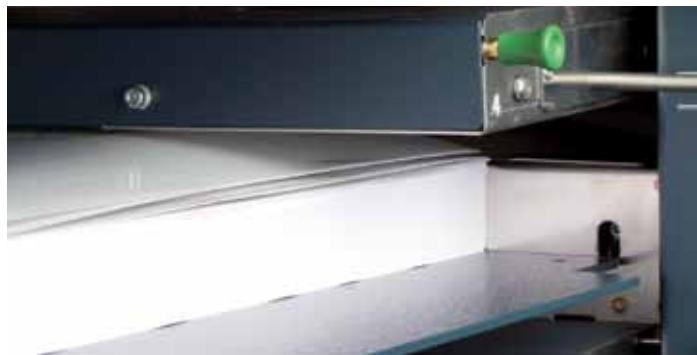
- The system is expandable at any time tower by tower up to 50 stations.
- The Bourg unique original full width suction belt feeding system feeds the widest range of paper qualities and weights from 45 gsm to 250 gsm and from CD size up to 350 x 520 mm.
- The collator system is fully expandable with stacker, combined criss-cross jogger, straight jogger, and a range of automatic and manual adjustment booklet making and square fold accessories.

BSTd

Bin individual height control by photocell (not marked by a switch).

Easy clean DMC photocells.

Stainless steel antistatic paper path (others use painted static metal)



The most evolved sheet feeding system in the world, unique to Bourg.

- Bourg uniquely uses super high power dual brushless turbines (built into the machine and not outside), with a full width high volume air plenum, for a full width air suction perforated belt feed, with individual air valves per bin.
- This system is so good it has been selected by OEM customers to feed their own devices.
- Other inferior systems use a plastic feed roller with point contact (less grip and more marking) or narrow width belt feeding, with a tiny air plenum, and tiny computer cooling fans with very low output, and no air valves, so feeding is irregular.
- The air blast system has its own built in turbine and blows 3 times more air to the paper pile than competition, allowing the top sheet to float free of the pile over its whole length, (no more doubles see picture).

The most advanced tower programming and adjustments, on any collator, ever.

You have the choice of 2 keyboard styles: a 'd' keyboard with traditional keypad and led display or a full color touch screen.

Programming features:

- Preset to 9999 sets.
- Set counter.
- Sheet cover inserter on last bin chosen.
- Sheet overlap control 0, 15, 30, 60, 90, 150, 200 mm for alignment of various paper qualities.
- Suction control, general, and bin by bin.
- Air blast control, general and bin by bin.
- Conveyor speed control to allow the running of light stocks (others have fixed speed).
- Bin splitting eg on 10 bin 2, 2, 2, 2 or 3, 3, 3, or 4, 4, 4, or 5, 5, and on up on multi tower versions.
- Multi tower selection.
- Copy of one tower bin selection to other towers.
- Sheet feeding rate adjustment according to paper quality.
- Left or right exit.
- Short or long feeding impulse for shorter or longer sheets.
- Jump from one program to another.
- 9 program memories.
- Active start program.
- Combo mode, effectively turns a 10 stations collator into a 12 or 14 bin one by multi feeding from the last bins (useful for calendar work on 1 tower).
- Pre-start mode to run up the machine to make fine bin adjustments before committing to feed.
- Pause function allowing 40 seconds to unload an accessory before automatic restart.
- Belt program to run the conveyors to empty remaining paper in paper path.
- Full technical menu with bin out program to continue running even with a defective bin.

Full color touch screen. (Extra features on d+ keyboard)

- Available on BSTd+ model.
- Easier programming via icons.
- Top and or bottom insert.
- Normal or fast insert mode.
- 999 named program memories.
- Visual technical menu.



BSTd 3 tower with TD-d left exit and AGRT, PAT, TRT, booklet maker illustrated.

Dual exit technology

This allows you to run the right tower (main) either left or right into finishing accessories on the left side, such as the TD-d or jogger, while at the same time having the booklet making system installed to the right, which gives twice the flexibility to the system. Changeover is at the touch of a button and indicated by a direction light on the tower body or allows you to run several towers simultaneously to the right and to the left at the same time. Eg in a 4 tower system you could run 2 to the left and 2 to the right or any other mix you choose.

TD-d High pile stacker with straight or offset stacking.

Fully modular and expandable

Top quality, industrial duty, finely engineered finishing accessories. On line accessories for a multitude of finishing applications. All stitchers available with Hohner or ISP heads.

Manual adjustment accessories

The system is comprised of 3 modular units. Stitcher can be used either alone for top stitch, corner stitch, or for centre stitching in tandem with: folder is used behind the stitcher for booklet folding and can be used in tandem with: trimmer for the front trim of the booklet. Easy to adjust and made for decades of use. Available to fit BSTd, BSTd+ collators.



BME

Extra large format stitch, fold and trim accessories.

- Fully automatic with full colour touch screen control panel (unlike b+w limited controls of other makes).
- Takes the largest format sheets up to 370 x 600 mm.
- Fully automatic fold roller and unique booklet crusher belt technology.
- Folds up to 30 sheets at a time (70 gsm). Available with 1 to 4 standard or cassette wire heads.
- Visible, straight paper path.
- A4 finished landscape booklets are possible.
- Super heavy duty face trimmer with blower.
- Topstitch with bypass exit.
- Special feeding allows markless handling of digitally printed sheets.
- Square edge spine accessory option.
- Fits d+ system.
- Book kicker standard.

BDF

The most compact high-speed booklet maker

- Half the length of competitive booklet makers.
- High speed booklet making with fully automatic adjustment via keypad and LCD display.
- All functions you could ever want in a booklet maker are available.
- Top stitch.
- Corner stitch.
- Bypass exit.
- Centre stitch.
- From 1 to 4 heads.
- Standard or cassette wire heads.
- Automatic folding with unique downward fold knife for super accurate positioning.
- Face trim with waste blower and waste bin full sensor.
- Square edge spine accessory option.
- Fits all systems.

